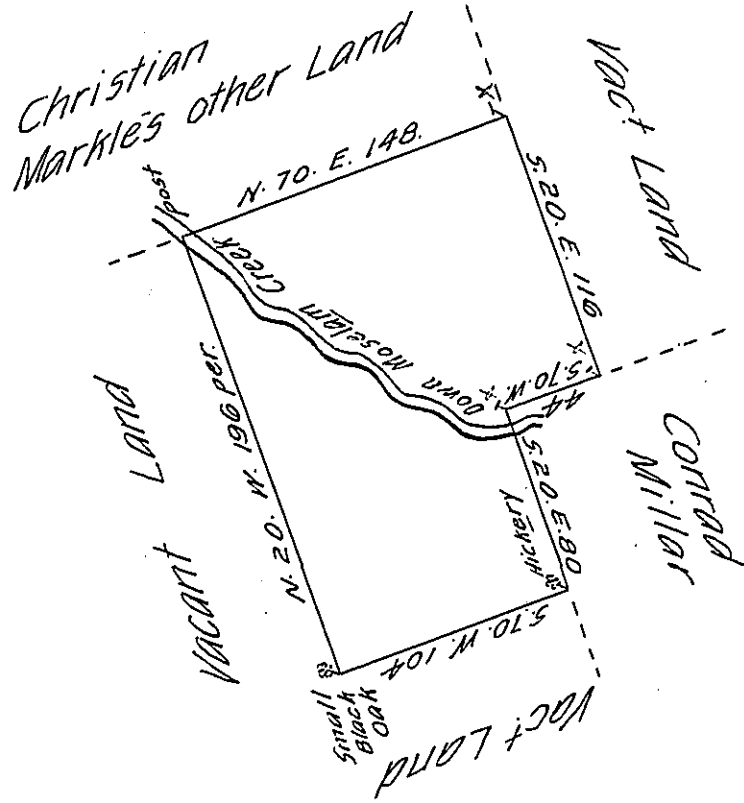


B9 193



By Virtue of a Warrant Dated the twenty third Day of April 1740. Surveyed the thirtieth Day of April 1740 to Christian Markle the above described Tract of Land situate on Moselem Creek in the County of Philad^a. Containing One hundred and fifty Acres & 45 p^s with Allowance of Six $\frac{1}{2}$ C^t

Nich^o Scull. —

IN TESTIMONY that the above is a copy of the original remaining on file in the Department of Internal Affairs of Pennsylvania, made conformably to an Act of Assembly approved the 16th day of February, 1833, I have hereunto set my Hand and caused the Seal of said Department to be affixed at Harrisburg, this twenty-fifth day of October 1905.

Isaac D. Prosser
Secretary of Internal Affairs.